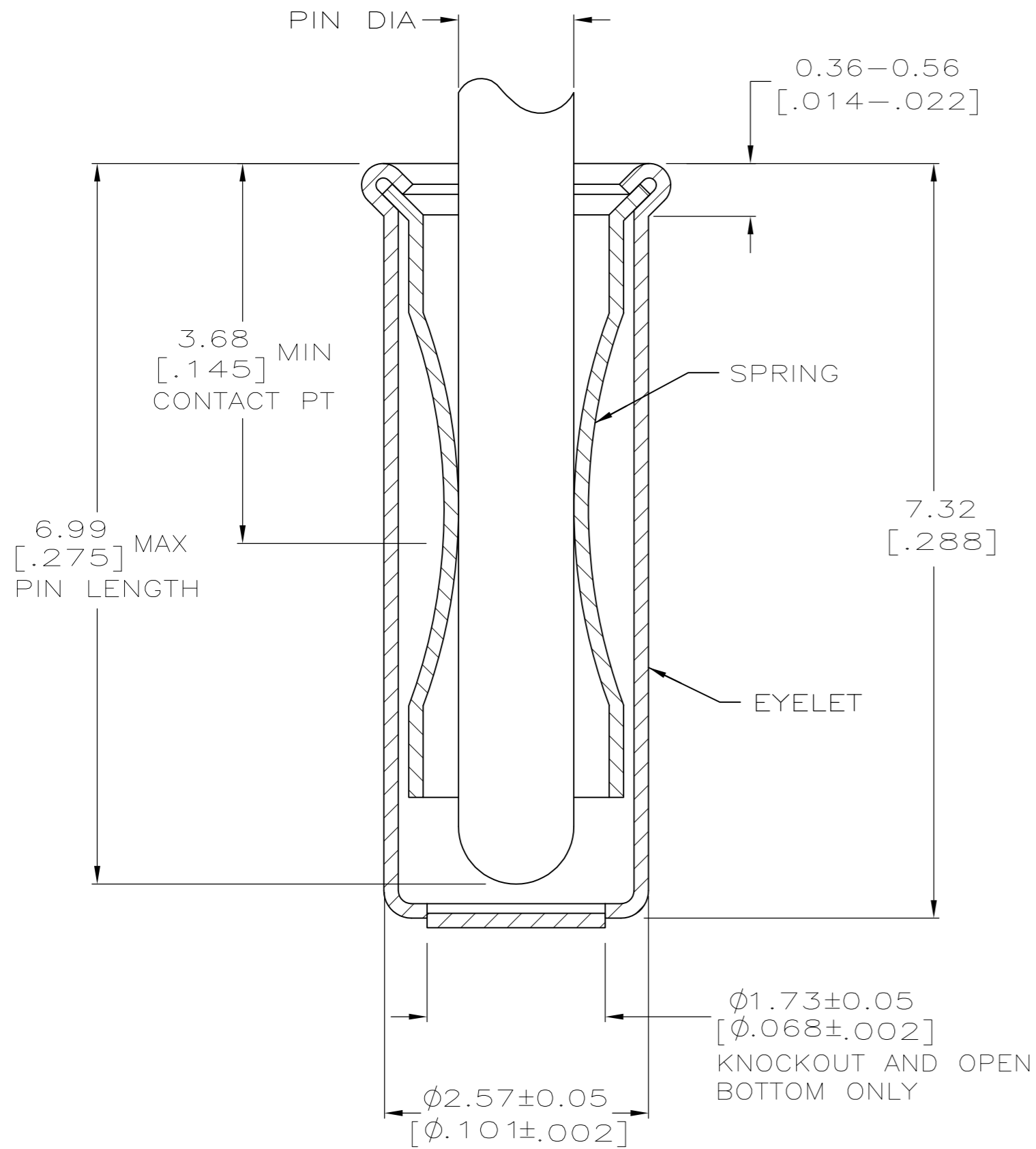
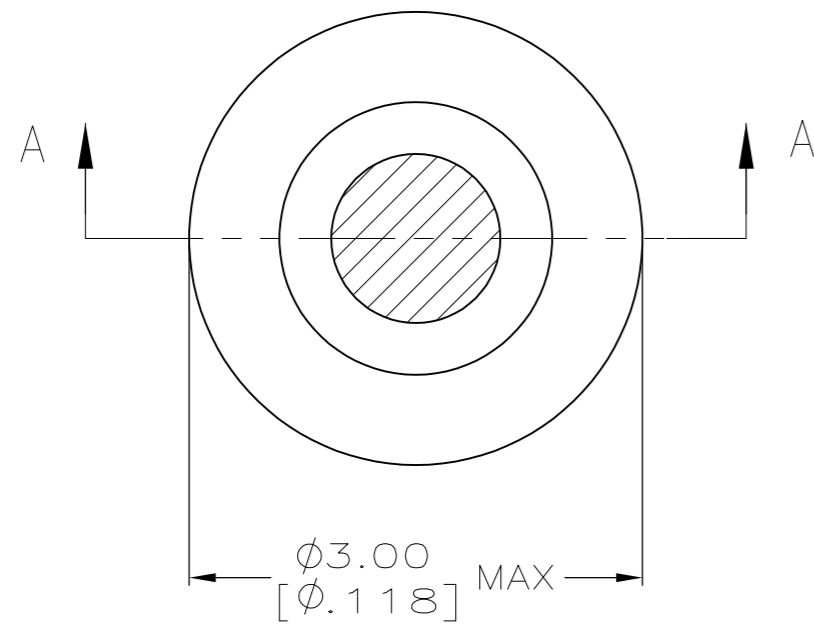


THIS DRAWING IS UNPUBLISHED. RELEASED FOR PUBLICATION
 © COPYRIGHT BY TYCO ELECTRONICS CORPORATION. ALL RIGHTS RESERVED.

| LOC | | DIST | | REVISIONS | | | |
|-----|-----|-------------|---------------------------|-----------|------|----|--|
| P | LTR | DESCRIPTION | DATE | DWN | APVD | | |
| GP | 00 | AE4 | REVISED PER ECO-07-022139 | 21SEP07 | DH | DB | |



SECTION A-A

1. TIN PER MIL-T-10727 OR TIN LEAD .00254 [.000100] MIN THK.
2. GOLD PER MIL-G-45204, TYPE II, 0.00076 [.000030] MIN THK OVER NICKEL PER QQ-N-290 0.00028 [.000011] MIN THK ON CONTACT AREA.
3. GOLD FLASH PER MIL-G-45204, TYPE II, 0.13µm [.000005] MIN THK. OVER NICKEL PLATE PER QQ-N-290 0.51µm-1.52µm
4. RECOMMENDED HOLE SIZE, PLATED OR UNPLATED:
 MACHINE INSERTION: 2.56±0.08 [.101±.003]
 HAND INSERTION: 2.62^{+0.10}/_{-0.00} [.103^{+0.004}/_{-0.000}]
5. APPLICATION TOOL PART NUMBER:
 MACHINE NO. 682127-6
 INSERTION HEAD NO. 682039-5
6. TO INSURE PROPER SPRING TENSION DO NOT EXCEED A 0.05 [.002] DIFFERENCE IN PIN DIA WHEN CHANGING TO A SMALLER PIN.
7. BOTTOM PLUG KNOCKOUT TOOL PART NUMBER 69729 WITH TIP PART NUMBER 69728-3.
8. TIN PER ASTM B 545, 0.00254 [.000100] MIN THK.
9. MATERIAL: SPRING: BERYLLIUM COPPER, QQ-C-533.
 EYELET: COPPER, QQ-C-576.

| SUPSD BY | FINISH | RECOMMENDED PIN DIA | FINISH | PART NO |
|-----------|--------|-----------------------|--------|-----------|
| 1-50871-4 | TIN 8 | 1.07-1.24 [.042-.049] | TIN 8 | 6-50871-8 |
| 50871-5 | GOLD 2 | 1.27-1.45 [.050-.057] | GOLD 2 | 2-50871-8 |
| OBSOLETE | TIN 1 | 1.07-1.24 [.042-.049] | TIN 1 | 2-50871-7 |
| OBSOLETE | TIN 1 | | TIN 1 | 2-50871-6 |
| OBSOLETE | TIN 1 | | TIN 1 | 2-50871-5 |
| OBSOLETE | TIN 1 | | TIN 1 | 2-50871-4 |
| OBSOLETE | TIN 1 | 1.42-1.65 [.056-.065] | TIN 1 | 2-50871-3 |
| OBSOLETE | GOLD 3 | | GOLD 2 | 2-50871-2 |
| OBSOLETE | TIN 1 | | GOLD 2 | 2-50871-1 |
| OBSOLETE | TIN 1 | | GOLD 2 | 1-50871-9 |
| OBSOLETE | GOLD 3 | | GOLD 2 | 1-50871-8 |
| OBSOLETE | TIN 1 | | TIN 1 | 1-50871-7 |
| OBSOLETE | GOLD 3 | 1.27-1.45 [.050-.057] | GOLD 2 | 1-50871-4 |
| OBSOLETE | TIN 1 | | GOLD 2 | 1-50871-3 |
| OBSOLETE | TIN 1 | | TIN 1 | 1-50871-0 |
| OBSOLETE | TIN 1 | | TIN 1 | 50871-8 |
| OBSOLETE | TIN 1 | | TIN 1 | 50871-6 |
| OBSOLETE | TIN 1 | | TIN 1 | 50871-5 |
| OBSOLETE | GOLD 3 | 1.07-1.24 [.042-.049] | GOLD 2 | 50871-4 |
| OBSOLETE | TIN 1 | | GOLD 2 | 50871-3 |
| OBSOLETE | GOLD 3 | | GOLD 2 | 50871-1 |
| OBSOLETE | GOLD 3 | | GOLD 2 | 50871 |
| | EYELET | | SPRING | |
| | FINISH | | | |

THIS DRAWING IS A CONTROLLED DOCUMENT. DWN R. TALLEY 20SEP05
 CHK R. MILLER 8-22-91
 APVD -
 PRODUCT SPEC -
 APPLICATION SPEC -
 WEIGHT -

Tyco Electronics Tyco Electronics Corporation
 Harrisburg, PA 17105-3608

NAME: MINIATURE SPRING SOCKET ASSEMBLY
 SERIES 5

SIZE: A2 CAGE CODE: 00779 DRAWING NO: C=50871 RESTRICTED TO: -
 SCALE: 20:1 SHEET: 1 OF 1 REV: AE4